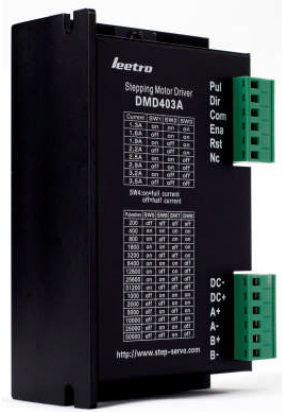


User Manual for DMD403A

(Manual Version 1.2)



Features:

- Dual H-bridge, inaudible PWM amplifier, Pulse width modulated current control, chopping at 20 KHz
- TTL compatible and optically isolated input
- Max Step/rev. up to 51200
- Input Voltage 24-40 VDC
- Switch selectable motor current 1.3 – 3.5A/phase
- Over current protection
- CE compliant

leetro

*Leetro Automation Co., Ltd
Building 8-B, Dayi Zone of Incubating Hi-tech,
No.1 South 2nd Keyuan Road,
Chengdu 610041, CHINA
www.leetro.com
tech@leetro.com*

1. Electrical Specifications

T_j=25°C

Parameters	Min.	Typical	Max.	Unit
Output Current	1.3	-	3.5	A
Power Supply	24	32	40	VDC
Logical Current	6	10	30	mA
Pulse Frequency	0	-	200	KHz
Isolation Resistance	500	-	-	MΩ
Approx. Net Weight	-	0.37	-	Kg

2. Operation Environment

Condition	Caution	Avoid dust and corrosive gas/oil
	Temp.	0°C ~ +50°C
	Humidity	Under 90% RH
	Vibration	5.9m/s ² Max
Storage Temperature		-20°C ~ +65°C

3. Micro-step Setting

Micro-step	Steps/rev. (1.8° Motor)	SW5	SW6	SW7	SW8
1	200	off	off	off	off
2	400	on	on	on	on
4	800	on	off	on	on
8	1600	on	on	off	on
16	3200	on	off	off	on
32	6400	on	on	on	off
64	12800	on	off	on	off
128	25600	on	on	off	off
256	51200	on	off	off	off
5	1000	off	on	on	on
10	2000	off	off	on	on
25	5000	off	on	off	on
50	10000	off	off	off	on
125	25000	off	on	on	off
250	50000	off	off	on	off

NOTE:

Please shut down and re-apply power after micro-step setting is changed!

4. Pins

Pin	Description
Pul	One step ahead when the pulse rising edge is active. Step distance is subject to the micro-step.
Dir	This Active-high/low signal is used for determining the rotate direction of motor. Please note that rotation direction is also related to the connection of motor wires.
Com	+5VDC for optical-isolation, max 15mA
Ena	This signal is used for enabling/disabling the driver. Active-high for enabling the driver (optical-isolation is not through), Active-low for disabling the driver (optical-isolation is through).
Rst	To reset the driver in initial status (Phase A on, Phase B off)
Nc	Not Available
DC-	Power Ground
DC+	Power Supply, +24~40VDC, including voltage fluctuation and EMF voltage.
A+	Motor Phase A
A-	
B+	Motor Phase B
B-	

5. Output Current Setting

5.1 Dynamic Current

Peak Current (A)	SW1	SW2	SW3
1.3	on	on	on
1.6	off	on	on
1.9	on	off	on
2.2	off	off	on
2.5	on	on	off
2.9	off	on	off
3.2	on	off	off
3.5	off	off	off

5.2 Standstill Current

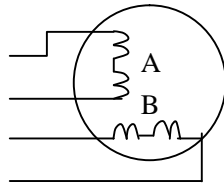
SW4 defines the standstill current.

Status “off” is to set the standstill current as the half of dynamic current.

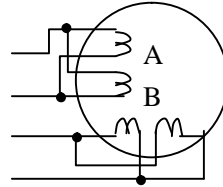
Status “on” is to set the standstill current as same as the dynamic current.

6. Wiring Connections

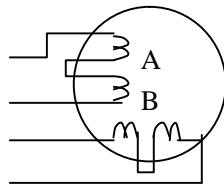
6.1 to the Stepper Motor



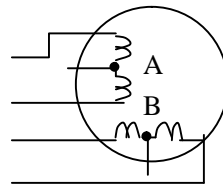
4-lead



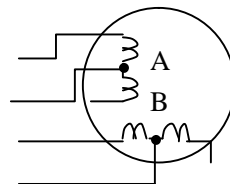
8-lead (Parallel)



8-lead (Series)

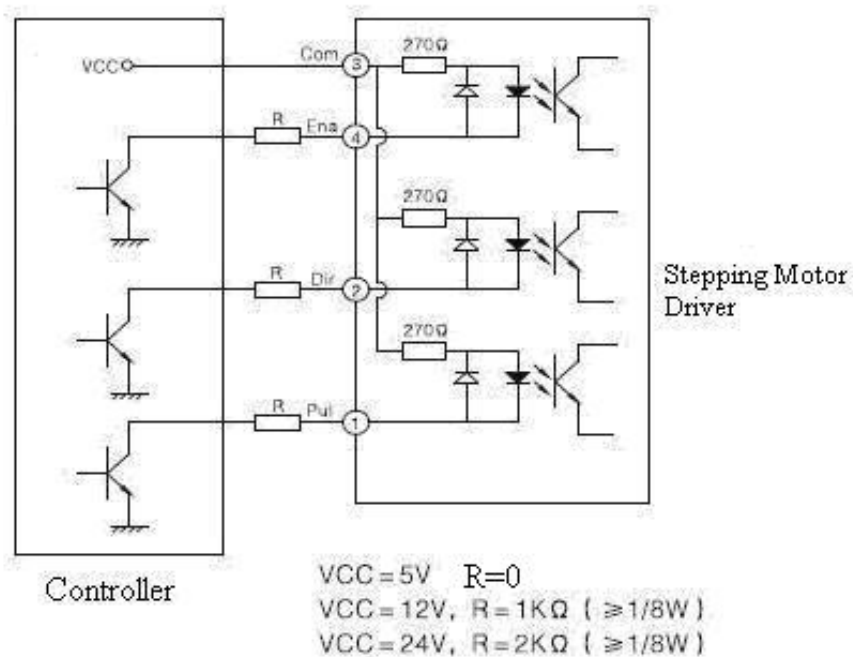


6-lead (for Higher Torque)

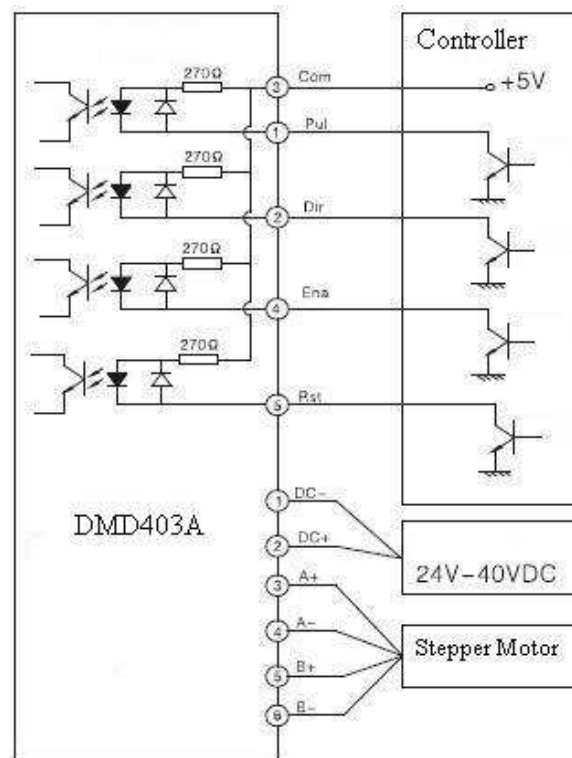


6-lead (for Higher Velocity)

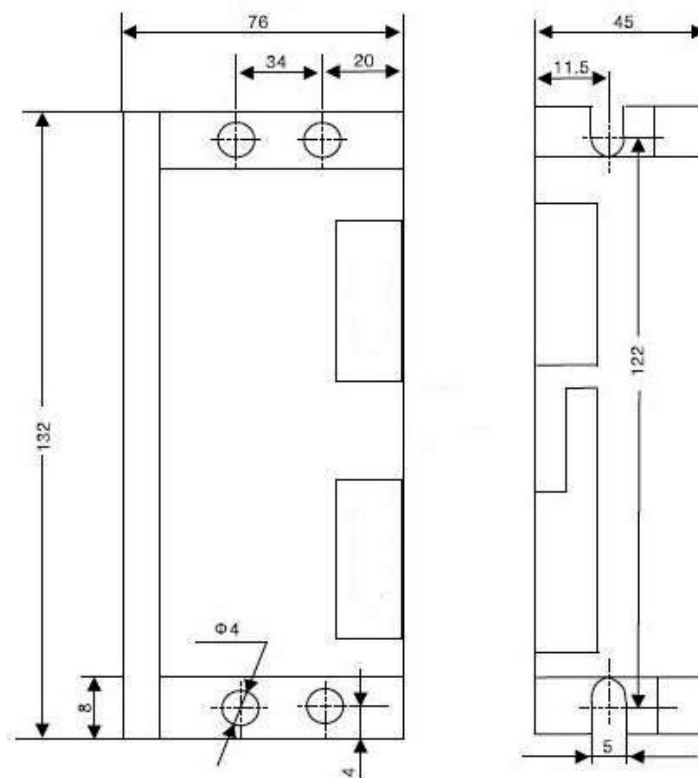
6.2 to the Controller (Common Anode)



6.3 Typical System



7. Mechanical Structure (unit: mm)



8. Sequence Chart of Control Signal

